



ClicWall

Decorative wallcovering

ClicWall, the innovation in decorative wallcovering

ClicWall is a MDF wall panelling system that provides a highly decorative finish for renovation projects. Thanks to the patented Uniclic technology, the panels click quickly and effortlessly into one another. The final result is a scratch-resistant wall system with a washable outer layer for ease of maintenance. The panels come in standard sizes of 600 mm wide, 2785 mm high and 10 mm thick, other sizes are available on request.

ClicWall FR is also included in the offer: fire-retardant panels with Euro Class B-s2,d0. In specific formations, ClicWall achieves a fire resistance of 30 minutes and 1 hour respectively, both supported with a European certificate.

In addition to a comprehensive range of innovative designs, we also offer **ClicWall Deco**. The panels are supplied with an outer foil layer that can be finished with paint, fabric, wallpaper or digital print.



Why choose ClicWall?



A broad spectrum of high-quality designs

ClicWall offers beautiful solutions for all your interior projects thanks to the diverse range of high-quality UNILIN Evola designs. By choosing an innovative design, you can give a project the added value you are looking for. The collection also contains a large variety of plain designs, that will guarantee a classic and timeless wallcovering.



Splashproof, scratch-resistant and hygienic

The protective, robust melamine layer ensures a splash proof surface. This upper layer is washable, and makes ClicWall an extremely hygienic and easy to maintain product. If you are looking for a resilient finish, then ClicWall offers you the ideal solution that guarantees the perfect appearance even for the long term.



Neat and quick finished result

Thanks to the patented Uniclic profile, the panels click into one another perfectly and provide the required end result in a short time. Because the ClicWall panels do not require any further finish, you can save a lot of time and keep dust and dirt during installation to a minimum.



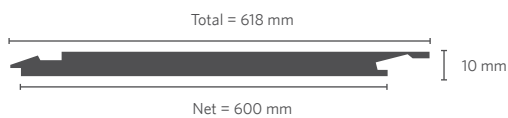
ClicWall guarantees sustainable forestry due to the use of PEFC labelled timber varieties.



Technical information

Dimensions and weight

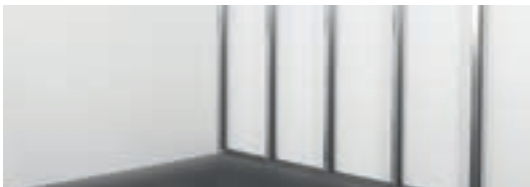
- Standard gross dimensions:
2785 x 618 x 10 mm (HxWxD)
- Standard nett dimensions:
2785 x 600 x 10 mm (HxWxD)



ClicWall can be supplied in different dimensions with a maximum height of 3050 mm and a maximum width of 1000 mm.

Weight 1 panel: 14 kg

Substructures



Metal substructure



Timber substructure



Timber battens straight onto wall

Combinations of these substructures are also possible.

Packaging

- Flat pack: 2 panels per pack
- Bulk: 80 panels stacked with top and baseplate

Fixing systems



Screw

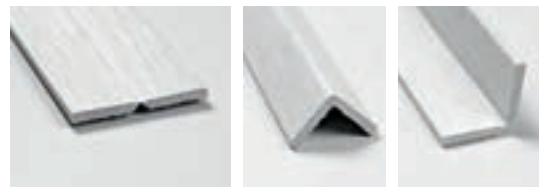
Staple

Glue with MS polymers

Accessories

Profiles and skirting boards shown below will ensure a perfect finish:

- Flexible interior and external corner profile in a matching design
Dimensions: 2750 x 42 x 3 mm



- Aluminium external corner profile
Length: 2785 mm



- Skirting boards in matching design
Dimensions: 2400 x 80 x 12 mm
- Paintable skirting boards
Dimensions: 2400 x 160 x 16 mm

Fire resistant ClicWall installations

ClicWall, installed in a specific formation, as described below, will guarantee fire resistance of 60 and 30 minutes respectively.

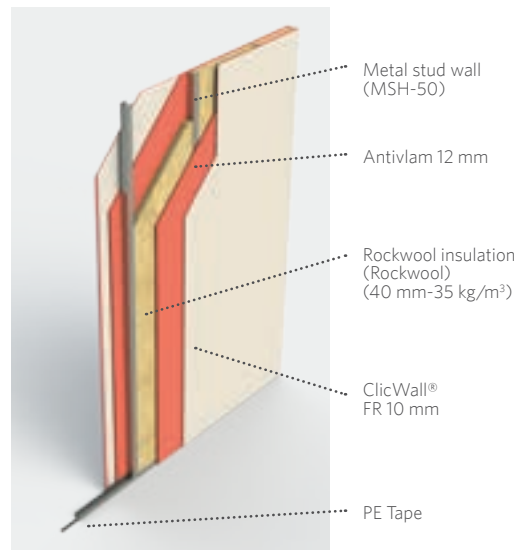
ClicWall installation with fire resistance EI60

European certificate for non-bearing partition wall - EN 1364-1:1999

Construction:

- ClicWall FR 10 mm (Euro Class B-s2,d0): Fix with assembly kit (MS Polymer dots - spaced 200 mm apart) against 12 mm Antivlam (fire retardant chipboard)
- Antivlam 12 mm: fixed with wood screws (4.0 x 25 - spaced 300 mm apart) against metal stud wall
- Rockwool insulation (RockSono Base 210): 40 mm - 35 kg/m³
- Sub structure: metal studs 50 mm
- Seal: PE50 tape (supple isolation tape)

Acoustic standard of installation described above: $R_w = 52\text{dB}$ (Cw-4, Ctr-11)



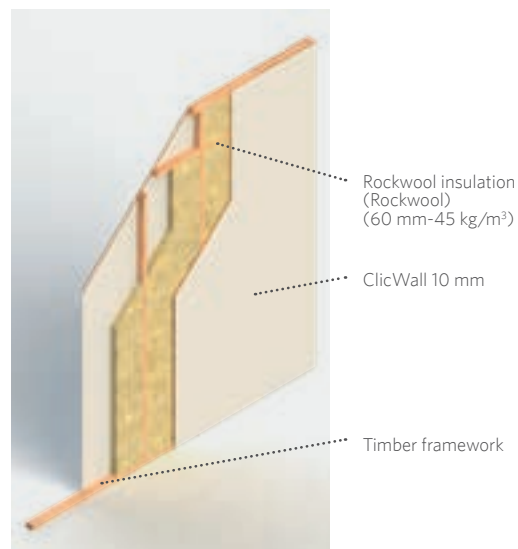
Antivlam against metal stud wall: wood screw 4.0 x 25
ClicWall® FR on Antivlam: MS-polymer bonding

ClicWall installation with fire resistance EI30

European certificate for non-bearing partition wall - EN 1364-1:2015

Construction:

- ClicWall 10 mm (Euro Class D-s2,d0): fixed with wood screws (3.5 x 16 - spaced 300 mm apart) against timber substructure
- Rockwool insulation (RockSono Solid 211): 60 mm - 45 kg/m³
- Substructure: timber battens 38 x 63 mm



ClicWall against timber battens: wood screw 3.5 x 16



UNILIN Evola is a new collection of designs, available in ClicWall, for professionals in the interior sector. With a broad spectrum of designs as well as a palette of solid colours, UNILIN Evola offers the perfect alternative to wood, concrete and other materials. With 105 designs, you will find a solution for every project, without having to compromise on creativity.

UNILIN Evola is also available in melaminated Sheet material, HPL and edging tapes.

Structures ClicWall

ClicWall is available in several structures. Discover the unique lifelike and faithful textures



CST - Soft Pearl

Subtle light grain structure



BST - Topmat

Super-matt surface texture



MAT - Mat

Matt surface texture



W03 - Linewood

Tangible and linear wood texture



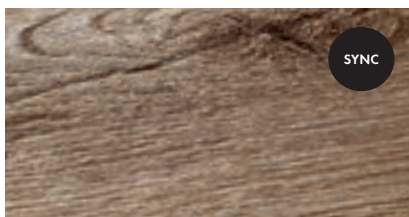
W04 - Deepwood

Highly distinctive and extremely deep texture



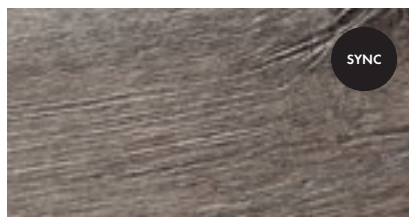
W06 - Veneer wood

The distinctive matt texture, deep pores and weathered patina create a pure wood look.



V8A - Royal Oak

The lifelike flowers, smooth patches and knots in the wood translate into a tangible relief texture. The smooth patches are emphasised by a gloss finish. A matt finish emphasises the cracks and knots.



V9A - Heritage Oak

The lifelike cracks and small imperfections mirror the authentic and weathered look of recovered oak.

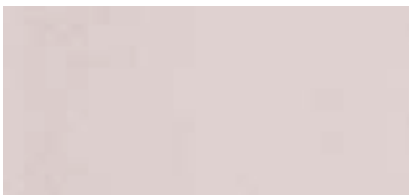


Z5L - Minnesota Oak

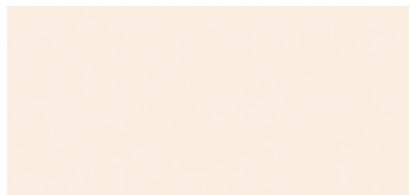
The elaborate wood patterns and small knots create a rustic effect. Matt and glossy areas combine to give a vibrant, realistic look.

SYNC - Synchronous surface texture - The texture perfectly mirrors the pattern of the wood.

ClicWall in stock



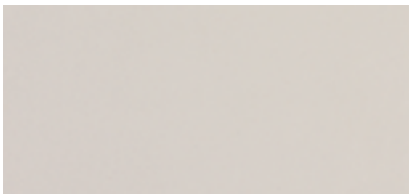
050 - MAT | Deco



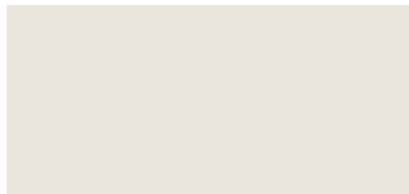
025 - CST | Front white



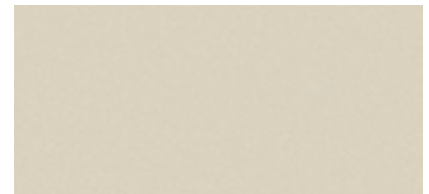
025 - W03 | Front white



625 - CST | Silicon



U147 - CST | Seashell



U127 - CST | Dune beige



H163 - BST | Flakewood white



F989 - BST | Pure Concrete light



H450 - V9A | Heritage Oak light patina



H588 - V8A | Royal Oak vanille



H786 - W06 | Robinson Oak brown



H784 - W06 | Robinson Oak light natural



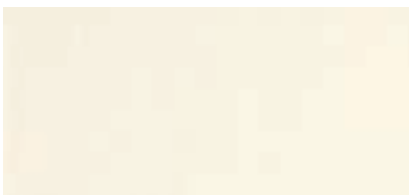
113 - W06 | Elegant black

Fire-retardant ClicWall - Front white (025-CST en 025-W03) and Silicon (625-CST) are supplied from stock on a fire-retardant MDF with fire reaction B-s2,d0. All other designs can be supplied to order on fire-retardant MDF.

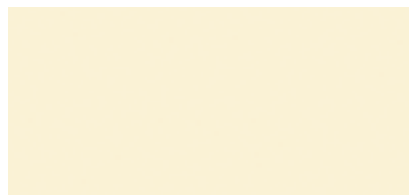


ClicWall to order

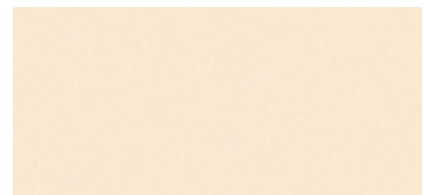
ClicWall to order can be supplied in quantities of 80+ panels.



O20 - CST | Basic white



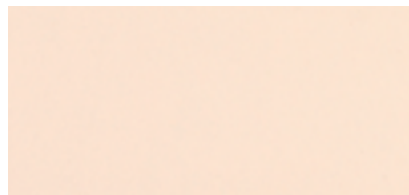
U172 - CST | Ivory



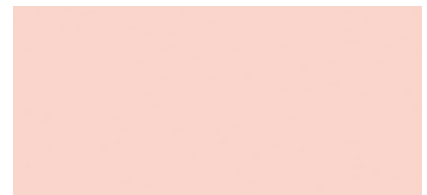
U222 - CST | Rice paper



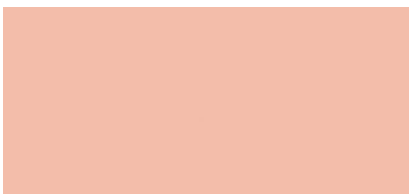
UD59 - CST | Creamy



551 - CST | Jasmina



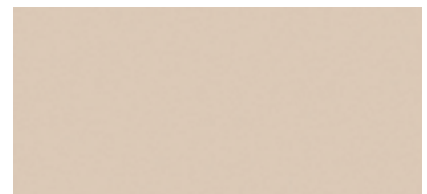
U640 - CST | Lychee



U656 - CST | Tanned peach



U292 - CST | Turtle grey



U655 - CST | Mushroom beige



U178 - CST | Mineral grey



U271 - CST | Misty grey



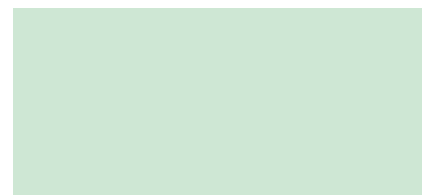
U146 - CST | Cloud grey



UD26 - CST | Elephant grey



U647 - CST | Frozen blue



U149 - CST | Pale green



U285 - CST | Lemon



U136 - CST | Sunshine



U135 - CST | Amber yellow



U651 - CST | Smoothie green



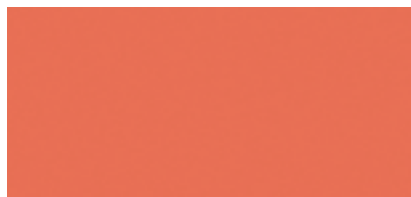
U650 - CST | Tea leaf



U641 - CST | Indian curry



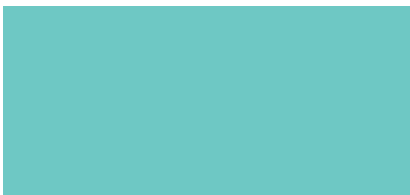
U279 - CST | Goldfish orange



U654 - CST | Coral



U272 - CST | Tiger orange



U142 - CST | Exotic blue



U648 - CST | Silver blue



U649 - CST | Electric blue



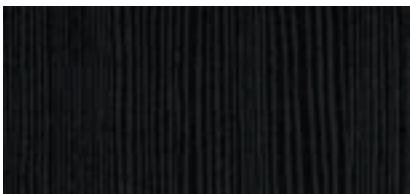
U129 - CST | Shadow



UD81 - CST | Quartz



113 - CST | Elegant black



113 - W03 | Elegant black



H866 - BST | Everest Oak



H362 - BST | Suomi Ash



H387 - BST | Marne Oak



H780 - W06 | Romantic Oak light



H868 - BST | Rila Oak



H863 - BST | Etna Oak



H877 - BST | Venamo Oak



H853 - BST | Riverside Oak



H847 - BST | Allegro Beech light



H425 - W03 | Rena Pine



0944 - CST | Modena Apple



H720 - BST | White Birch



H534 - BST | Odessa Beech



H337 - BST | Pearl Oak



H320 - BST | Belisio Oak



H878 - BST | Paruma Oak



H399 - W03 | Canice Oak



H339 - BST | Solara Oak



0747 - CST | Jura Beech



H327 - BST | Oak Rustique



H852 - W03 | Essential Oak natural



H851 - BST | Atlas Oak



H785 - W06 | Robinson Oak beige



H781 - W06 | Romantic Oak honey natural



H891 - BST | Delano Oak



H338 - CST | Granada Oak



H864 - BST | Fiji Oak



H582 - BST | Dinara Walnut



0766 - CST | Natural Oak



H440 - Z5L | Minnesota Oak warm natural



H162 - Z5L | Minnesota Oak natural



H782 - W06 | Romantic Oak brown



H438 - V9A | Heritage Oak medium brown



H876 - BST | Todi Oak



H335 - BST | Torino Oak



H397 - BST | Robson Oak



H865 - BST | Sinai Oak



H581 - BST | Aneto Walnut



H437 - V8A | Royal Oak natural



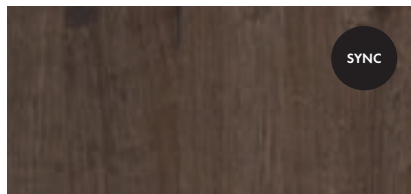
H561 - BST | Italian Walnut



H378 - BST | Garonne Oak



H562 - BST | Arabica Walnut



H164 - V8A | Royal Oak dark brown



H842 - BST | Eiger Walnut



H843 - BST | Snowdon Oak



H161 - V9A | Heritage Oak light



H783 - W06 | Romantic Oak dark grey

SOAP
SHOP







SYNC

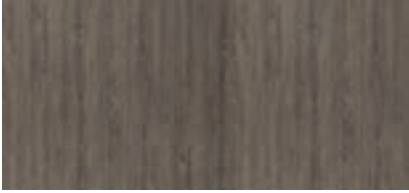
H160 - Z5L | Minnesota Oak greige



H844 - BST | Bellavista Oak



H894 - W03 | Nevis Oak

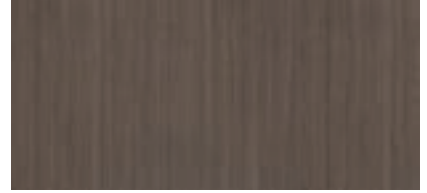


H892 - BST | Logan Oak



SYNC

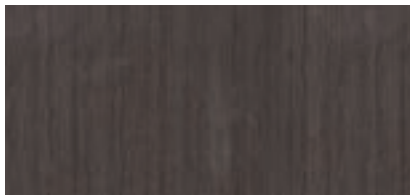
H439 - V9A | Heritage Oak dark



H689 - W03 | Amazonia



H336 - BST | Verona Oak



H385 - W03 | Hudson Oak



H687 - CST | Kivu Wenge



SYNC

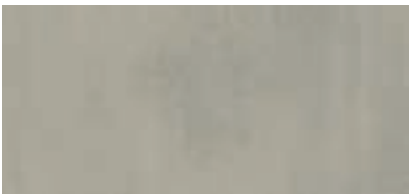
H441 - Z5L | Minnesota Oak chocolat



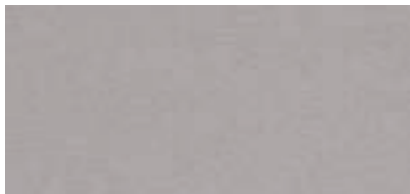
H850 - CST | Fumed Oak



F976 - BST | Granulo



F987 - CST | Oxid grey



F939 - CST | Brushed metal



760 - CST | Brushed Alu

free. sample. service.

See AND feel the authenticity of our UNILIN Evola designs and test the patented Uniclic system.
Request your free samples at www.unilinpanels.com



UNILIN, division panels

UNILIN, division panels is part of the UNILIN group. Since our foundation in 1960, we have grown into an international player supplying solutions for the construction industry, as well as the furniture and interior sectors.

UNILIN is synonymous with (r)evolution. Thanks to continual investment in design, technology, research and development, our divisions have grown to become leaders in their fields.

By means of a powerful vertical integration, from tree to finished product, using creativity as our motor and innovation as our driver, we develop tailor-made solutions to your needs.



Ingelmunstersteenweg 229, 8780 Oostzebeke - Belgium
T +32 56 66 70 21 - F +32 56 66 82 25
info.panels@unilin.com - www.unilinpanels.com